

# MISENO

## SINGLE HANDLE PRE-RINSE KITCHEN FAUCET

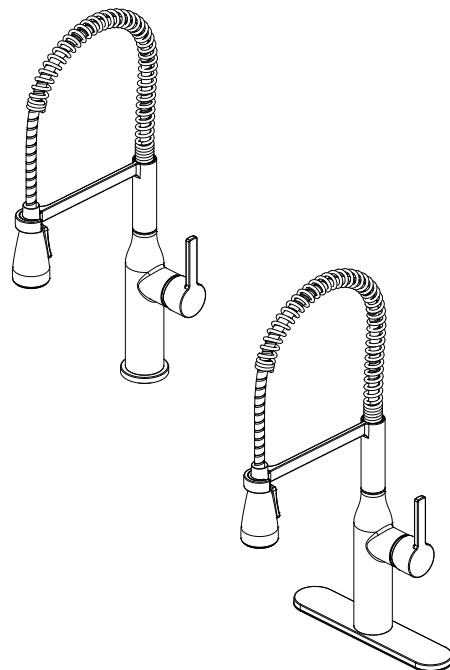
Model:

MNO500LCP

MNO500LZSS

MNO500LFB

MNO500LCG



### CAUTION-TIPS FOR REMOVAL OF OLD FAUCET:

*Always turn off water supply before removing existing faucet or replacing any part of the faucet. Open the faucet handle to relieve water pressure and ensure that water is completely shut off.*

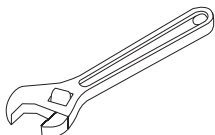
### CARE INSTRUCTIONS:

*To preserve the finish of your faucet, apply non-abrasive wax. Any cleaners should be rinsed off immediately. Do not use abrasive cleaners on the faucet.*

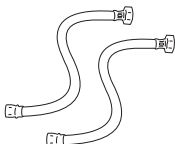
### You may need/Usted puede necesitar



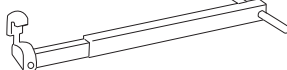
Goggles



Wrench



(2) Supply Lines



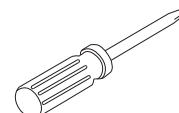
Basin Wrench



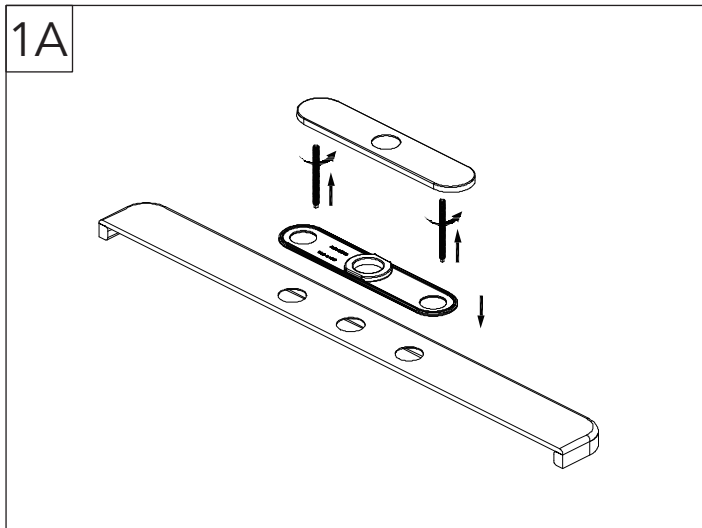
Sealant Tape



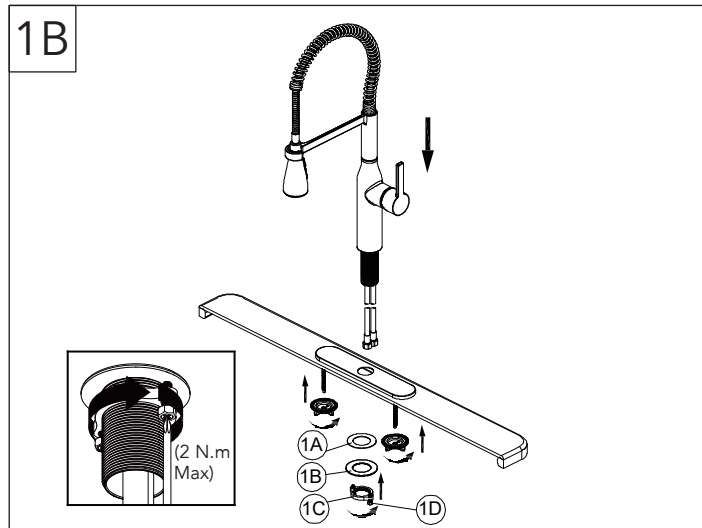
Silicone



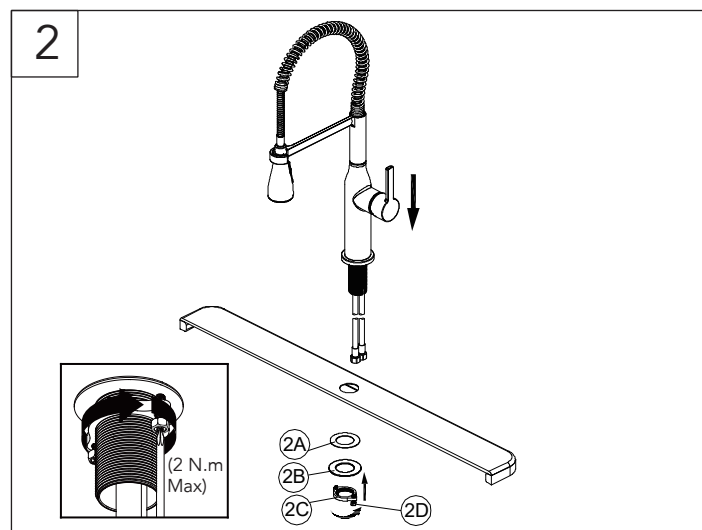
Phillips Head Screwdrivers



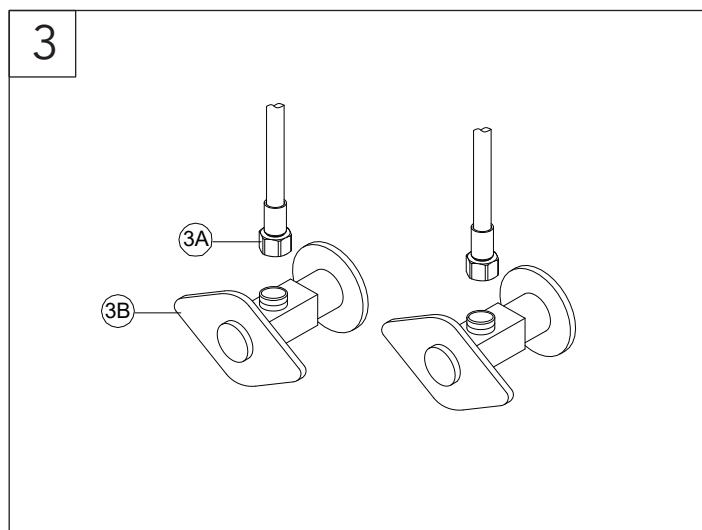
Screw bolts to the escutcheon.  
Insert escutcheon assembly through the base plate and the holes of the sink.



Insert faucet through hole in escutcheon.  
From underneath sink, attach rubber washer (1A), metal washer (1B), and nut (1C). Lock nut (1C) into position by tightening screws (1D).

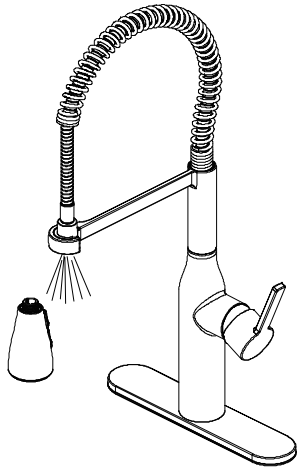


Insert faucet through hole in sink or countertop.  
From underneath sink, attach rubber washer (2A), metal washer (2B), and nut (2C). Lock nut (2C) into position by tightening screws (2D).



Making the waterline connections.  
Thread the nut (3A) on supply line onto outlet of water supply valve (3B) and tighten with wrench. Do not over tighten.

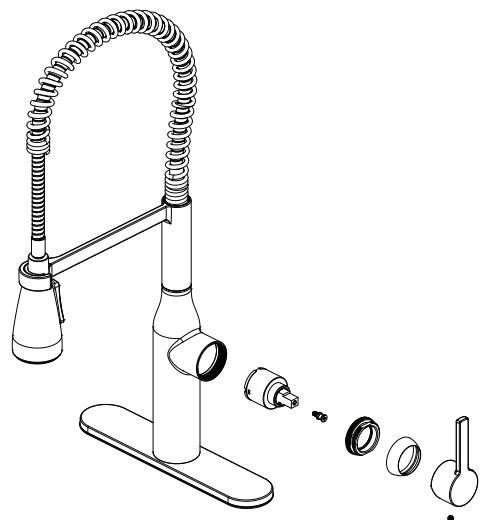
4



Important: After installation is completed, to prevent damage to the internal parts of your faucet from debris that may have collected in the water lines, it will be necessary to flush the faucet. Turn on hot/cold water supplies and remove spray head. Hold the end of the hose down into the sink and turn the faucet on to the warm position so hot and cold water are mixed. Flush water lines for one minute. Check for leaks and re-tighten any connections if necessary. Reinstall spray head by screwing onto end of hose by hand.

#### Maintenance:

If faucet leaks underneath handle or water does not completely shut off: replace cartridge.



\* Specify Finish

